



PERSPECTIVE OF OLD AND NEW CITY LIBRARY WITH OBSERVATORIEKULLEN

SITE PLAN 1:1 000



THE NEW CITY LIBRARY OF STOCKHOLM

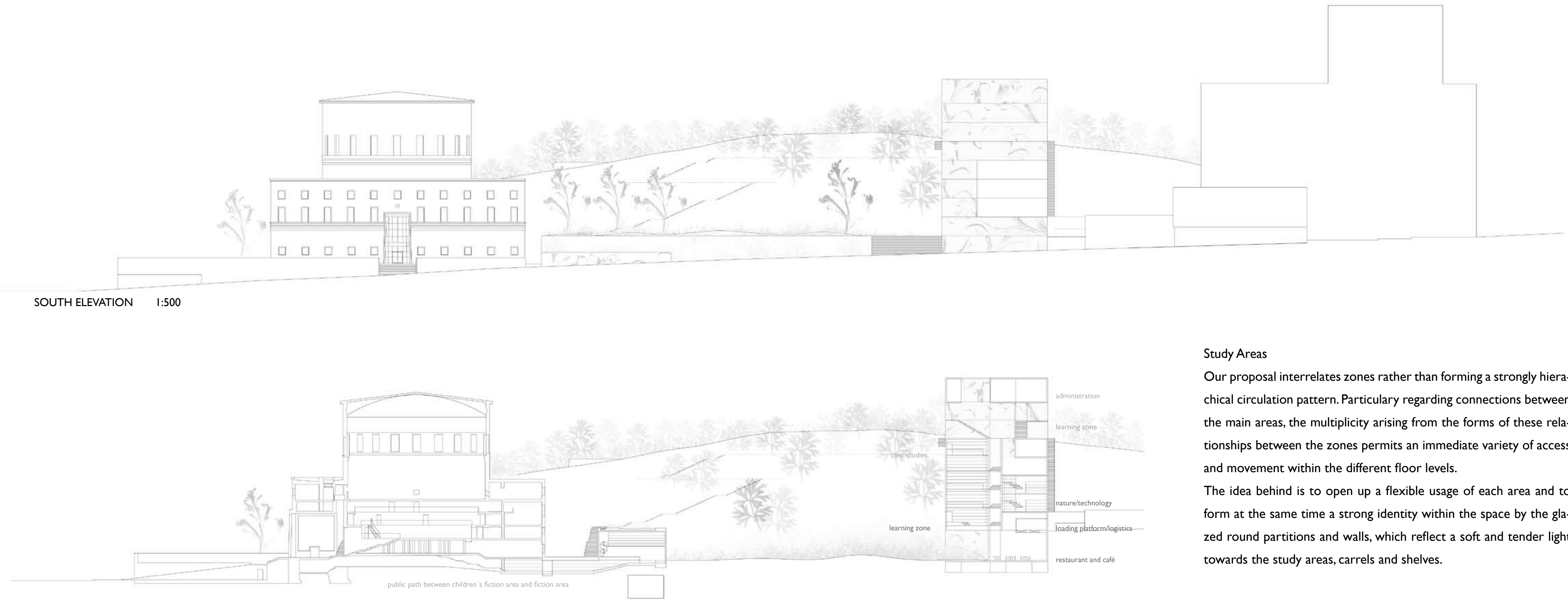
Concept

Asplund's Library
With respect towards the existing library of Asplund as a major architectonic heritage the new library is located in distance to create a new horizon. This visual gaze tries to modify aspects of his architecture into a contemporary language such as his understang of light, modesty and simplicity. Yet by choosing a completely different material for the new library - white glass printed with translucent leave ornaments of delphinium - the poetic and monumental language of Asplund is transformed into a dissolving image of light.
Still there is the belief in a correspondence between the inner spatial qualities of Asplund's library and the new proposal, which is defined through the components of light, the roundness of the circle and the flow of space. Another important aspect to create a dialogue is the space in between the existing library and the new proposal. By repeating the theme of a base the access to the new library will be also raised on an upper level to introduce a quiet atmosphere far away from the traffic noise of the city. The top of the base will be full of greenery and will function as a visible extension of the hill with blue fields of delphinium in summer.
In so far the iteration of the base is not only an architectonic reiteration but also the deliberate repetition of a green and open interplay between two dominant buildings as it is created by Asplund between the Stockholm School of Economic and the Public Library.

Exterior/Interior/Public Path

To connect the existing and new library with eachother several public pathes inside and outside the buildings are defined to create a smooth flow of movement. Everybody - visitors of the library as well as anybody of the city - is invited to use the inner public pathes and stairs to reach their destinations. At the same time visitors can also use a path through the new library to access the observatory hill. Along this path several public functions as the learning zone I, the restaurant, the café, lecture halls, auditoriums and green exterior spaces are located to correspond with the new social desires of a public library. People can freely select their own experience - it becomes a place where children, adults and the elderly can approach a new interactive vitality within the city of Stockholm.

SOUTH ELEVATION 1:500



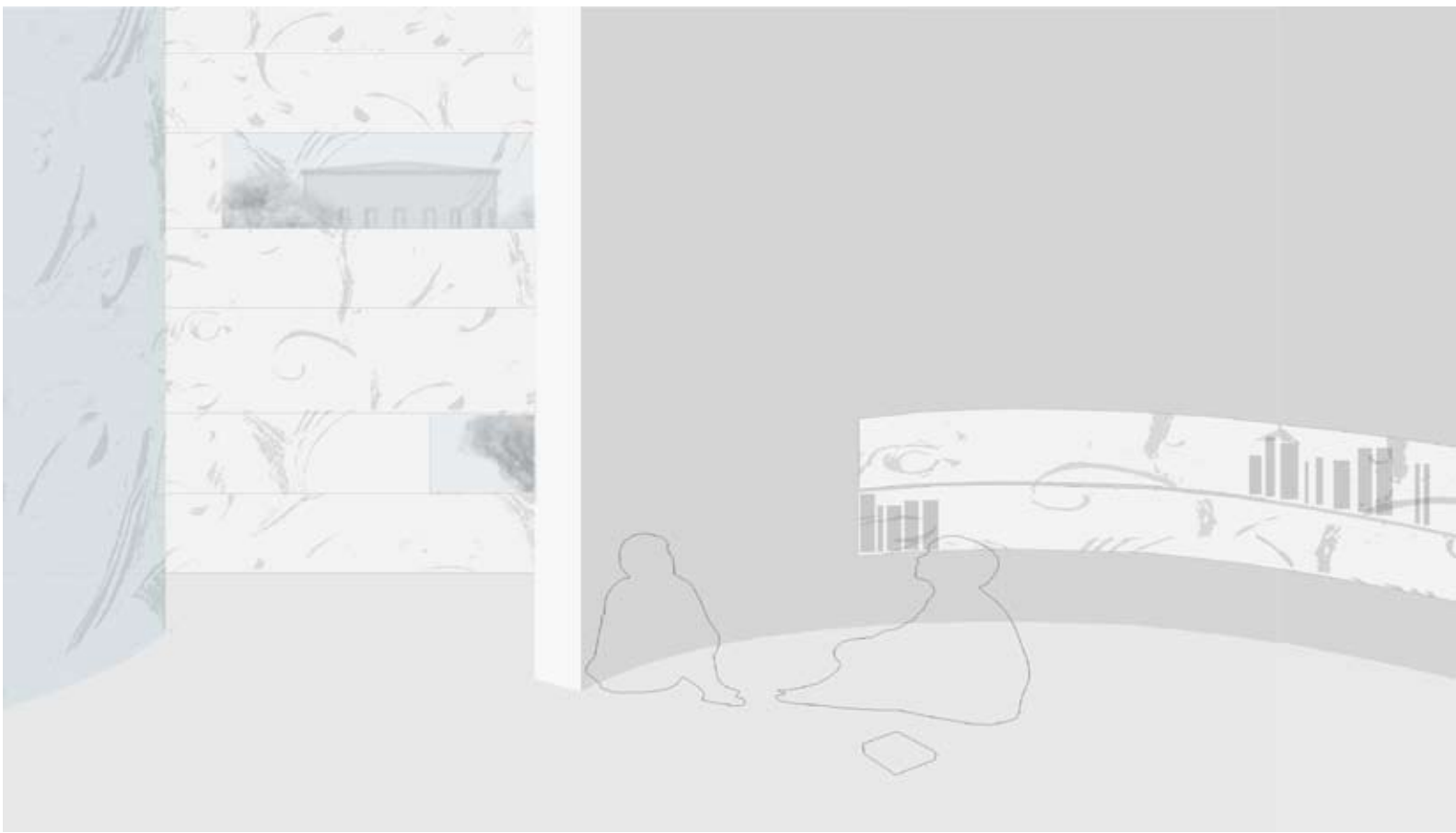
SECTION 1:500

Study Areas

Our proposal interrelates zones rather than forming a strongly hierarchical circulation pattern. Particularily regarding connections between the main areas, the multiplicity arising from the forms of these relationships between the zones permits an immediate variety of access and movement within the different floor levels.
The idea behind is to open up a flexible usage of each area and to form at the same time a strong identity within the space by the glazed round partitions and walls, which reflect a soft and tender light towards the study areas, carrels and shelves.



LEVEL 2 / PUBLIC LEARNIG ZONE



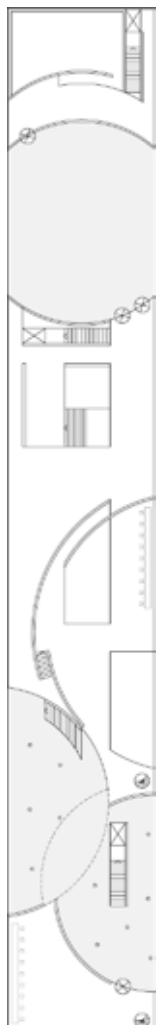
LEVEL 3 / READING CORNER WITH VIEW TOWARDS ASPLUND



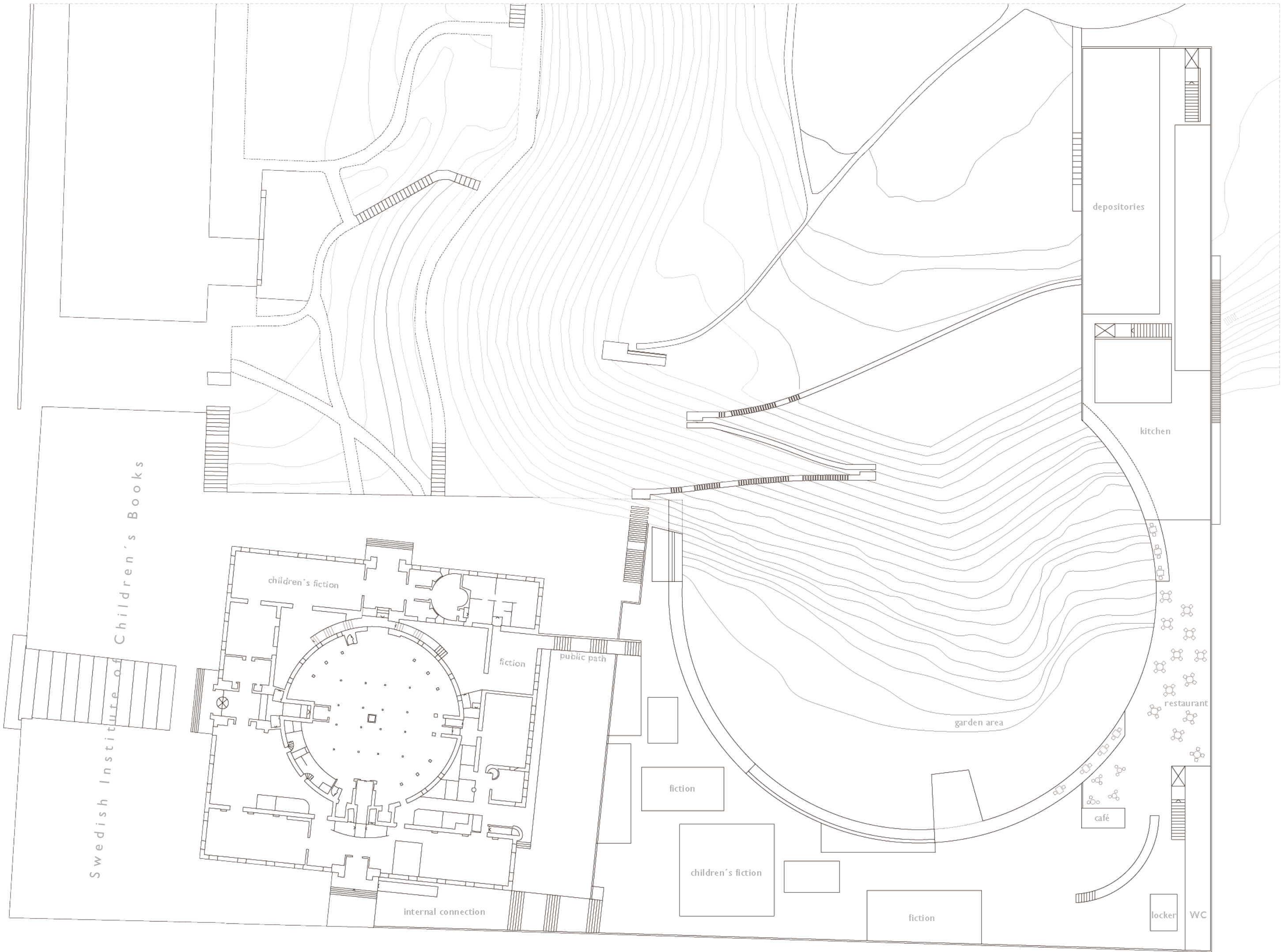
LEVEL 3



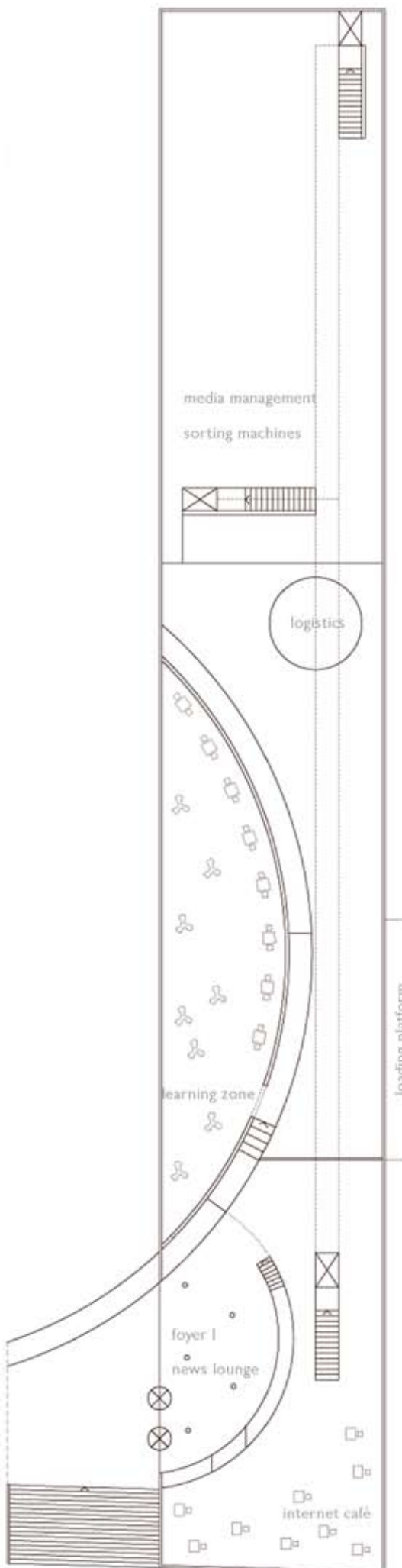
LEVEL 3.B



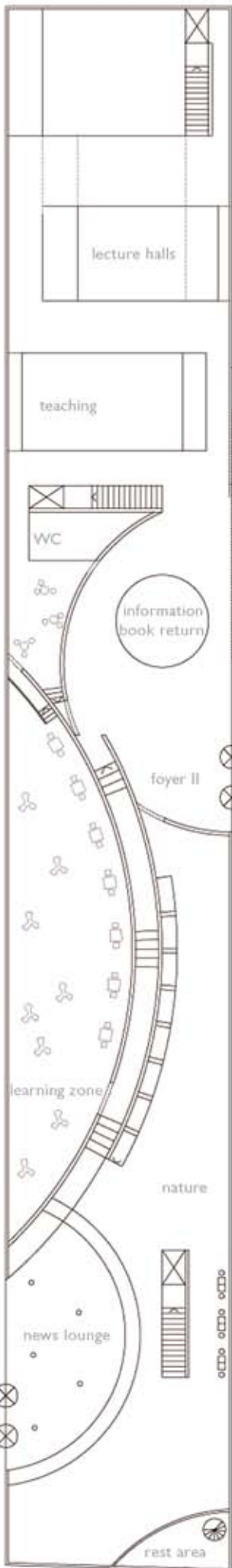
LEVEL 5
1:1 000



LEVEL -2 1:500



ENTRANCE LEVEL 0 1:500



LEVEL 1 1:500



ELEVATION 1:500



SECTION 1:500

PUBLIC AREAS / ALL

foyer 1+2+3 (news)	450
internet café	300
learning zone	400 / level 0; 24 hours open
other learning zones	1000 / different levels
studios/media studios	700
teaching	200
lecture halls	500
visit oriented activities	1700
toilets etc.	200
café	300
restaurant/kitchen	700
fiction	1500
children's fiction	900
foreign languages	1900 / Asplund library
arts	1800
aesthetics	700 / Asplund library
civic studies	1700

18650

nature/technology
people/countries
young people

1400
1800
500

DEPOSITORY MEDIA
MANAGEMENT / ALL

depositories
sorting machines
media management
logistics/loading platform
caretakers office

1000
150
600
200
400

ADMINISTRATION

2000

SWEDISH INSTITUTE OF
CHILDREN'S BOOKS

1000

TOTAL MUA

24 000